



Industrial Printers

# ZX1000Xi+ Series

## High Speed & Prime Performance

Time costs money, especially on the production line where every second counts. The High-Speed ZX1000Xi series will without a doubt elevate your performance and your productivity. The heavy-duty print mechanism, and flexible software, combine with multiple interfaces and comprehensive accessories to help fulfill your most demanding applications.

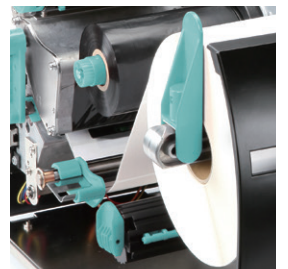


### Sturdy Structure & Ultrarapid Printing

Supports print speeds up to 14 ips at 203 dpi to help boost production efficiency. Its robust steel construction was designed for maintaining premier print quality even at maximum print speed.

### Effortless Media & Ribbon Loading

A side-loading ribbon and media path allow for more intuitive media installation. Automatic self-adjustment for coated inside/outside ribbons gives you the flexibility to utilize different ribbons. Supports a 450-meter ribbon capacity and up to 8-inch diameter media (3" core) for bulk printing.





## Intuitive and User-Friendly UI

A 3.2-inch color touch screen, with an intuitive UI design, allows the user to be in control. Dual-Colored status LEDs and a simple calibration button strive to create simplicity. 256 MB flash memory with resident 5 TTF fonts allow for multilingual printing.

## Space Saving Stand-Alone Feature

Three USB host ports are standard, which allows for easy integration into multiple devices, or memory expansion. The stand-alone feature helps make the best use of a limited production space.



## Distinct Dual-Colored Status LEDs

The left, green colored LED button is for powering the device on and off. The right button is the control key, which can be used to implement FEED, PAUSE, and CANCEL, and has a dual-colored LED back-light. Both of them are easy to use and understand clearly.


## Multiple Connectivity Options

The ZX1000Xi+ comes equipped with standard USB, Serial, and Ethernet ports for easy integration into existing systems, and to connect to various networks. An optional WiFi and Bluetooth module is available for fast and reliable wireless connections



# Specification

2024/11/18

<b>Model</b>			
		ZX1200Xi+	ZX1300Xi+
<b>Print Method</b>		Thermal Transfer / Direct Thermal	
<b>Resolution</b>		203 dpi (8 dots/mm)	300 dpi (12 dot/mm)
<b>Print Speed</b>		Up to 14 ips (356 mm/s)	Up to 10 ips (254 mm/s)
<b>Print Width</b>		4.09" (104 mm)	4.09" (104 mm, up to 105.7 mm)
<b>Print Length</b>		Min. 0.12" (3 mm)** ; Max . 279.53" (7100 mm)	Min. 0.12" (3 mm)** ; Max. 125.98" (3200 mm)
<b>Processor</b>		32 Bit RISC CPU	
<b>Memory</b>	<b>Flash</b>	256 MB(Free for user storage 162 MB)	
	<b>SDRAM</b>	256 MB	
<b>Sensor Type</b>		Adjustable reflective sensor and transmissive sensor, left aligned	
<b>Media</b>	<b>Type</b>	Continuous form, gap labels, black mark sensing, and punched hole; label length set by auto sensing or programming	
	<b>Width</b>	Tear : Min. 0.8" (20 mm) – Max. 4.65" (118 mm) Cutter : Max. 4.61" (117 mm) Dispenser : Max. 4.65" (118 mm)	
	<b>Thickness</b>	Min. 0.0024" (0.06 mm) – Max. 0.01" (0.25 mm)	
	<b>Label roll diameter</b>	Max. 8" (203.2 mm)	
	<b>Core diameter</b>	Min. 1.5" (38.1 mm) – Max. 3" (76.2 mm)	
<b>Ribbon</b>	<b>Types</b>	Wax, wax/resin, resin	
	<b>Length</b>	Max. 1476' (450 m)	
	<b>Width</b>	Min. 1.18" (30 mm) – Max. 4.33" (110 mm)	
	<b>Ribbon roll diameter</b>	3" (76.2 mm)	
	<b>Core diameter</b>	1" (25.4 mm)	
<b>Printer Language</b>		EZPL, GEPL, GZPL, GDPL auto switch	
<b>Software</b>	<b>Label design tool</b>	GoLabel II (for EZPL only) (Windows)	
	<b>Management tools</b>	GoTools (Windows / Android / iOS) GoUtility (Windows)	
	<b>APP</b>	GoAPP(Android / iOS)	
<b>Driver</b>		Windows 7, Windows 8 & 8.1, Windows 10, Window11, Windows Server 2008 R2, 2012, 2012 R2, 2016, 2019, 2022, MAC, Linux	
<b>SDK</b>		Win CE, .NET, Windows 7, Windows 8 & 8.1, Windows 10, Windows 11, Android, Mac, iOS	
<b>Resident Fonts</b>	<b>Bitmap fonts</b>	6, 8, 10, 12, 14, 18, 24, 30, 16X26 and OCR A & B 0°, 90°, 180°, 270° rotatable, single characters 0°, 90°, 180°, 270° rotatable 8 times expandable in horizontal and vertical directions	
	<b>TTF Fonts</b>	(Bold / Italic / Underline) 0°, 90°, 180°, 270° rotatable Internal TTF Fonts x5 : Traditional Chinese, Simplified Chinese, Japanese, Korean, Western languages	

<b>Download Fonts</b>	<b>Bitmap fonts</b>	0°, 90°, 180°, 270° rotatable, single characters 0°, 90°, 180°, 270° rotatable
	<b>Asian fonts</b>	16x16, 24x24. Traditional Chinese (BIG-5), Simplified Chinese(GB2312), Japanese(S-JIS), Korean (KS-X1001) 0°, 90°, 180°, 270° rotatable and 8 times expandable in horizontal and vertical directions
	<b>TTF fonts</b>	(Bold / Italic / Underline) 0°, 90°, 180°, 270° rotatable
<b>Barcodes</b>	<b>1-D Bar codes</b>	China Postal Code, Codabar, Code 11, Code 32, Code 39, Code 93, Code 128 (subset A, B, C), EAN-8/EAN-13 (with 2 & 5 digits extension), EAN 128, FIM, German Post Code, GS1 DataBar, HIBC, Industrial 2 of 5, Interleaved 2-of-5 (I 2 of 5), Interleaved 2-of-5 with Shipping Bearer Bars, ISBT-128, ITF 14, Japanese Postnet, Logmars, MSI, Postnet, Plessey, Planet 11 & 13 digit, RPS 128, Standard 2 of 5, Telepen, Matrix 2 of 5, UPC-A/UPC-E (with 2 or 5 digit extension), UCC/EAN-128 K-Mart, Random Weight and Pharmacode
	<b>2-D Bar codes</b>	Aztec code, Code 49, Codablock F, Datamatrix code, MaxiCode, Micro PDF417, Micro QR code, PDF417, QR code, TLC 39, GS1 Composite, DotCode, Marco PDF 417
<b>Code Pages</b>		Codepage 437, 737, 850, 851, 852, 855, 857, 860, 861, 862, 863, 865, 866, 869 Windows 1250, 1251, 1252, 1253, 1254, 1255, 1257 Unicode UTF8, UTF16BE, UTF16LE
<b>Graphics</b>		Resident graphic file types are BMP and PCX, other graphic formats are downloadable from the software
<b>Interfaces</b>		<ul style="list-style-type: none"> <li>• USB 2.0 (Type B)</li> <li>• Serial Port (RS232)</li> <li>• Ethernet 10/100 Mbps</li> <li>• USB Host *3 (Type A) 2 ports at the front panel, 1 port at the rear panel</li> </ul>
<b>Real Time Clock</b>		Standard
<b>Control Panel</b>		<ul style="list-style-type: none"> <li>• Backlight 3.2" touch screen LCD</li> <li>• 1 Power on/off button with green colour LED backlight</li> <li>• 1 Control key: FEED/PAUSE/CANCEL with dual colour LED backlight: Ready(Green); Error(Red)</li> <li>• 1 Calibration button at rear panel</li> </ul>
<b>Power</b>		Auto Switching 100-240VAC, 50-60Hz.
<b>Environment</b>	<b>Operation temperature</b>	41° F to 104° F (5° C to 40° C)
	<b>Storage temperature</b>	-4° F to 140° F (-20° C to 60° C)
<b>Humidity</b>	<b>Operation</b>	20-85%, non-condensing.
	<b>Storage</b>	10-90%, non-condensing.
<b>Agency Approvals</b>		CE (EMC), FCC Class B, CB, cULus, ICES-003, UKCA, BSMI, CCC, KC***
<b>Dimension</b>	<b>Length</b>	465 mm (18.3" )
	<b>Width</b>	269 mm (10.6")
	<b>Height</b>	312 mm(12.3")
<b>Weight</b>		13.6 Kg (30 lbs), excluding consumables
<b>Options</b>		Cutter module (User Install) – Rotary cutter, Guillotine cutter, Perforation cutter, High speed cutter, Paper card cutter Parallel port adaptor module (Centronic female 36-pin)(Dealer Install) WiFi (IEEE 802.11 b/g/n) and BT (BLE 5.0) combo module (Dealer Install) Applicator Interface (DSUB female 15-pin) External label rewinder Label Dispenser + Internal Rewinder (Dealer Install)

\* Specifications are subject to change without notice. All company and/or product names are trademarks and/or registered trademarks of their respective owners.

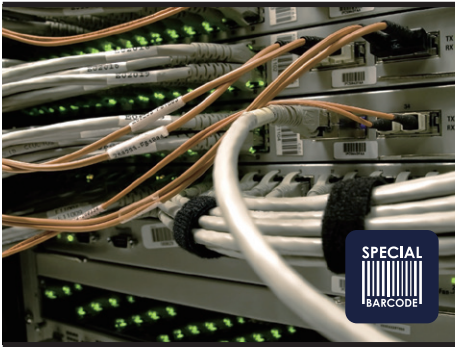
\*\* Minimum print height and maximum print speed specification compliance can be dependent on non-standard material variables such as label type, thickness, spacing, liner construction, etc. Godex is pleased to test non-standard materials for minimum print height, and maximum print speed capability.

\*\*\* The safety certification marks may be different depending on sales regions.

# Applications

## Applications for Labels & Barcodes

The ZX1000Xi+ series is extremely versatile and can be used for most applications.



### Special Materials

small components labeling, name plates, plastic tubes, plastic cards, cable labeling.



### Warehouse

shelf labels, product labels, stocking management, exterior/pallet labeling, etc.



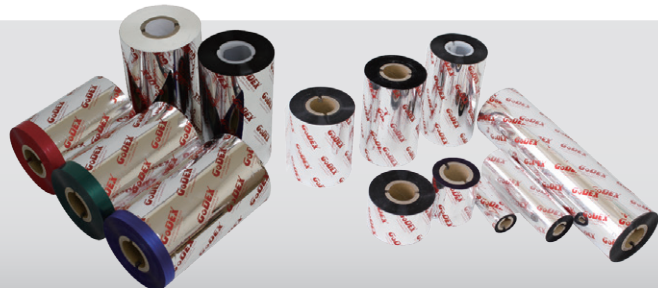
### Manufacturing

product labels, manufacturing labels, exterior/pallet labels, trade, stocking and document management, etc.

## GoDEX RIBBONS

Godex offers premium thermal transfer ribbons that will fit most of your printing applications.

- = Wax
- = Wax/ Resin
- = Resin
- = Near Edge



## GoDEX SOFTWARE



GoLabel II is based on a WYSIWYG (what you see is what you get) user interface, making everything so easy for users to create and print barcode labels.

GoLabel II is the first-choice in label design software, and all you need to start creating your own labels today!



Forget about installing complicated software, GoTools will show you the easiest way.



GoUtility can help users monitor GoDEX's printer status and deploy data to multiple printers through a concise user interface at the same time.